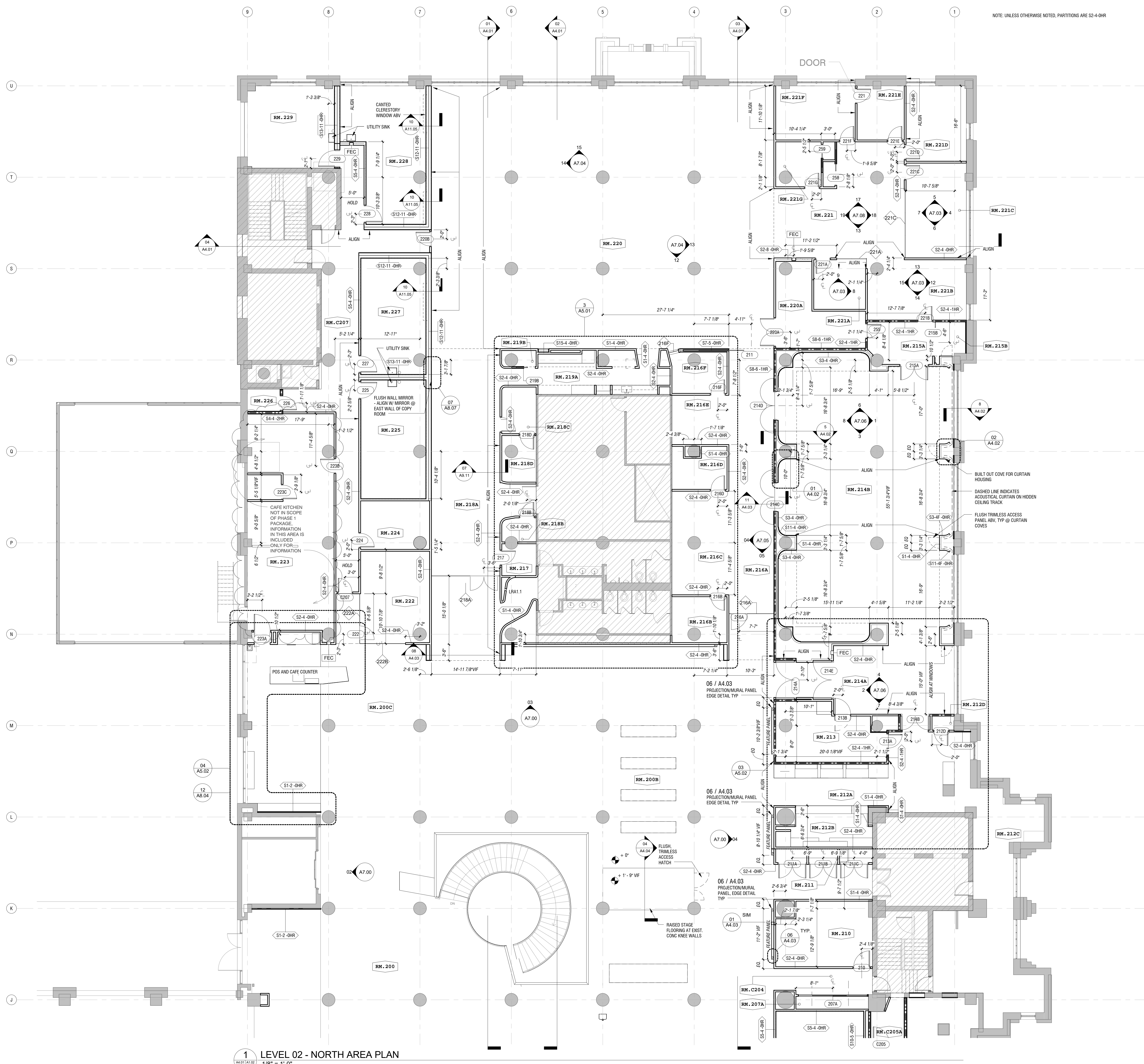


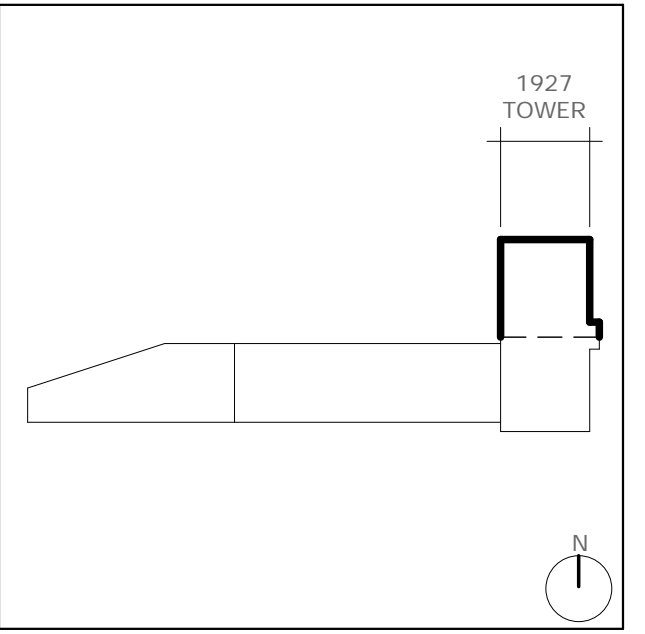
NOTE: UNLESS OTHERWISE NOTED, PARTITIONS ARE S2-4-OHR

**Room Schedule - Level 2.1**

Number	Name	Area
200	EAST ATRIUM (CORE & SHELL)	6598 SF
200B	INFORMAL PERFORMANCE SPACE	786 SF
200C	CAFE SEATING & POS	1518 SF
201	WEST GALLERY MAIN ROOM	1533 SF
201B	WEST GALLERY - BACK ROOM	268 SF
201C	WEST GALLERY - SIDE ROOM	373 SF
202	SCREENING ROOM	609 SF
202B	AV CLOSET	77 SF
203	STORAGE	271 SF
204	EAST GALLERY	2603 SF
204B	EAST GALLERY - INSTALLATION ROOM	349 SF
204C	EAST GALLERY - SIDE ROOM	Redundant Room
205	STUDIO 9	567 SF
206	STUDIO 10	550 SF
207A	CLOSET	52 SF
207C	CLOSET	13 SF
207D	BAR STORAGE	25 SF
207E	LANITORIAL	27 SF
208	STUDIO 7	314 SF
209	STUDIO 8	783 SF
210	CRIT ROOM	300 SF
211	BAR STORAGE	23 SF
212A	BAR	1385 SF
212B	BACKBAR	165 SF
212C	TOWER BAR SEATING	Redundant Room
212D	BAR STORAGE	17 SF
213	SERVICE PANTRY	280 SF
214A	LISTENING ROOM ANTEROOM	424 SF
214B	LISTENING ROOM	2284 SF
215A	GREEN ROOM	136 SF
215B	CONTROL ROOM	44 SF
216A	DEPT HEAD CORRIDOR	585 SF
216B	DIRECTOR OF EVENTS	124 SF
216C	PROJECT ROOM	286 SF
216D	DIRECTOR OF THEATER	112 SF
216E	PROJECT ROOM	142 SF
216F	DIRECTOR OF RESIDENCY	114 SF
217	HEAD CHEF	54 SF
218A	RECEPTION CORRIDOR	832 SF
218B	FACILITY STORAGE / WORK ROOM	99 SF
218C	VIDEO	84 SF
218D	VIDEO STORAGE	78 SF
219A	COPY & KITCHENETTE	291 SF
219B	COPY & KITCHENETTE	24 SF
220	OPEN WORKING AREA	4387 SF
220A	STORAGE	257 SF
221	ADMINISTRATIVE BREAKOUT	595 SF
221A	ASSISTANT DIRECTOR	132 SF
221B	DEVELOPMENT OFFICE	289 SF
221C	CONFERENCE ROOM	297 SF
221D	MANAGING DIRECTOR	245 SF
221E	BOOKKEEPING	135 SF
221F	DIRECTOR OF OPERATIONS	224 SF
221G	OFFICE	100 SF
222	MAC LAB CLASSROOM	310 SF
223	CAFE KITCHEN	918 SF
224	DRY STORAGE	164 SF
225	STUDIO 6	397 SF
226	TRASH	44 SF
227	STUDIO 5	387 SF
228	STUDIO 4	511 SF
229	STUDIO 3	380 SF
248	ART HANDLING / PREPARATOR	218 SF
250	CLOSET	209 SF
253	CLOSET	18 SF
254	FILM PRODUCTION STUDIO	1263 SF
C201A	L2 CORRIDOR - SOUTHWEST	Redundant Room
C201B	CORRIDOR	326 SF
C202	SOUTH CORRIDOR	1215 SF
C203	L2 CORRIDOR - SOUTHEAST	517 SF
C204	EGRESS STAIR CORRIDOR	128 SF
C205A	CORRIDOR L2 STAIR	70 SF
C205B	SOUTH STUDIO CORRIDOR	102 SF
C206	NORTH STUDIO CORRIDOR	176 SF
C207	NORTH STUDIO CORRIDOR	826 SF
262	UNOCCUPIED STORAGE PLATFORM	6886 SF
	Grand total:	48905 SF



**1 LEVEL 02 - NORTH AREA PLAN**  
1/8" = 1'-0"



15-011\_CROSTOWN ARTS  
495 N WATKINS ST.  
MEMPHIS / TN / 38104

owner:  
**CROSTOWN ARTS**  
422-438 N. Cleveland Street  
Memphis, TN 38104  
(901) 507-8030

design:  
**Spatial Affairs Bureau**  
3409 Carlton Street  
Richmond, VA 23230  
email: info@spatialaffairsbureau.com  
www.spatialaffairsbureau.com

architect:  
**Looney Kiss**  
175 Toyota Plaza #600  
Memphis, TN 38103  
901 521 1440

MEP + fire protection:  
**OGCB**  
3485 Poplar Avenue #200  
Memphis, TN 38111  
901 452 6283

food services:  
**Fisher & Associates**  
1685 Galloway Avenue  
Memphis, TN 38112  
901 278 3116

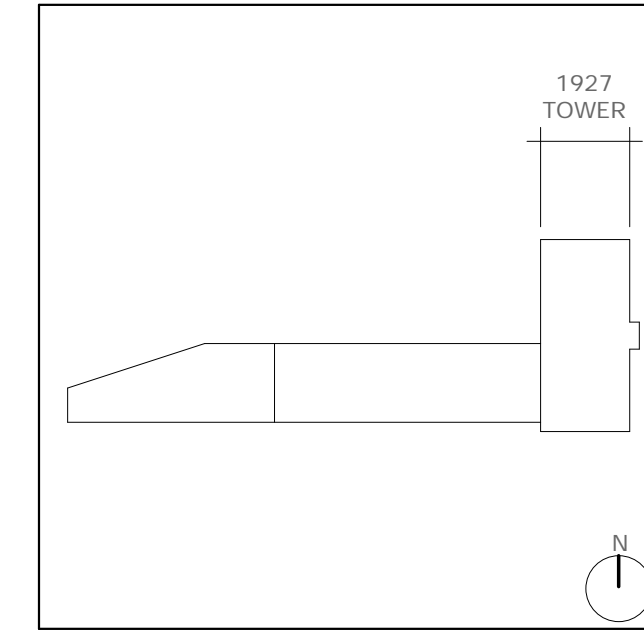
notes:

PERMIT SET  
1

date: 2016/10/31  
scale: as noted at 30"x42"  
drawn: Author  
checked: Checker  
project #: 15-011

AREA PLAN - LEVEL 2  
NORTH

**A1.02**



15-011\_CROSTOWN ARTS  
495 N WATKINS ST.  
MEMPHIS / TN / 38104

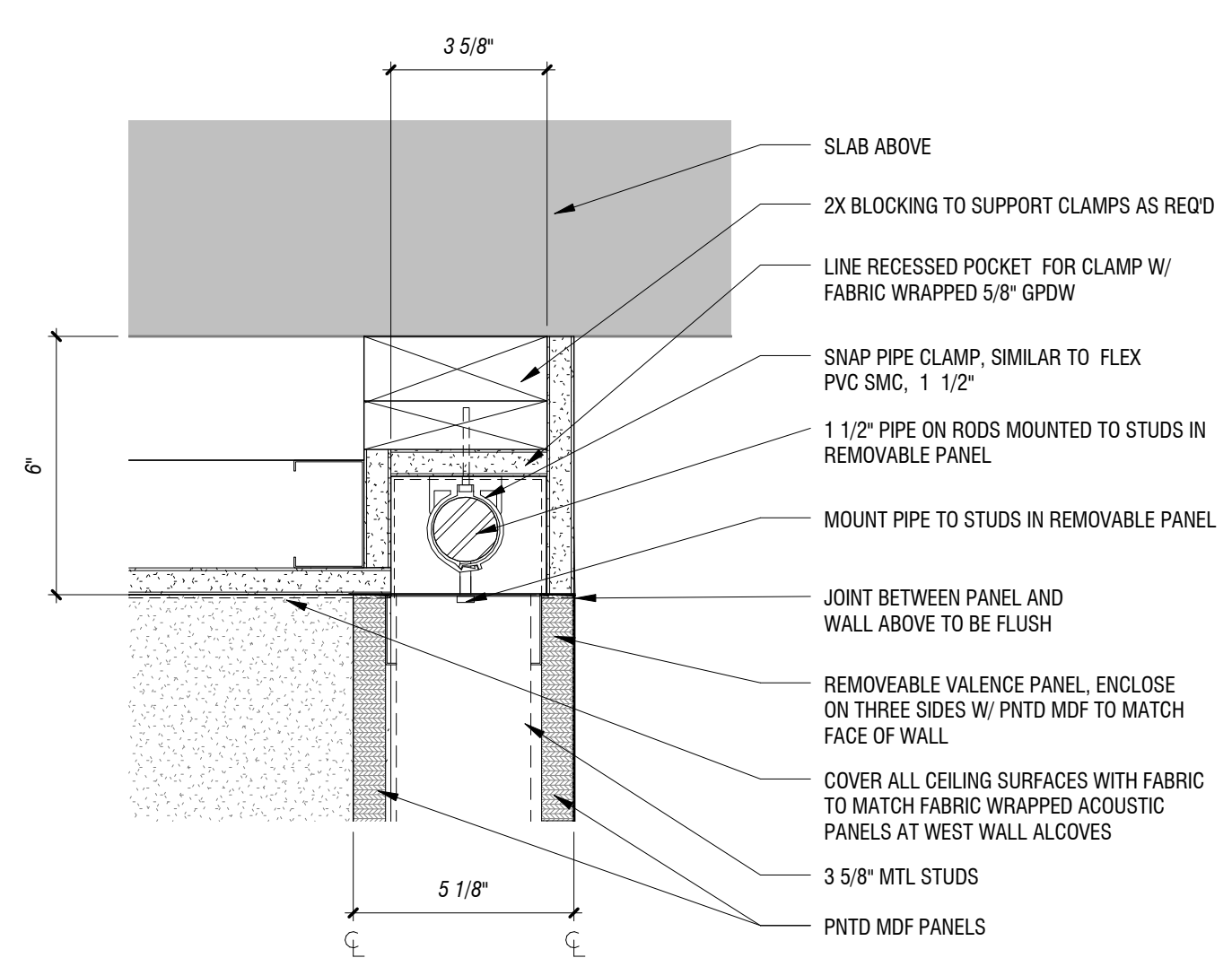
owner:  
**CROSTOWN ARTS**  
422-438 N. Cleveland Street  
Memphis, TN 38104  
(901) 507-8030

design:  
**Spatial Affairs Bureau**  
3409 Carlton Street  
Richmond, VA 23230  
email: info@spatialaffairsbureau.com  
www.spatialaffairsbureau.com

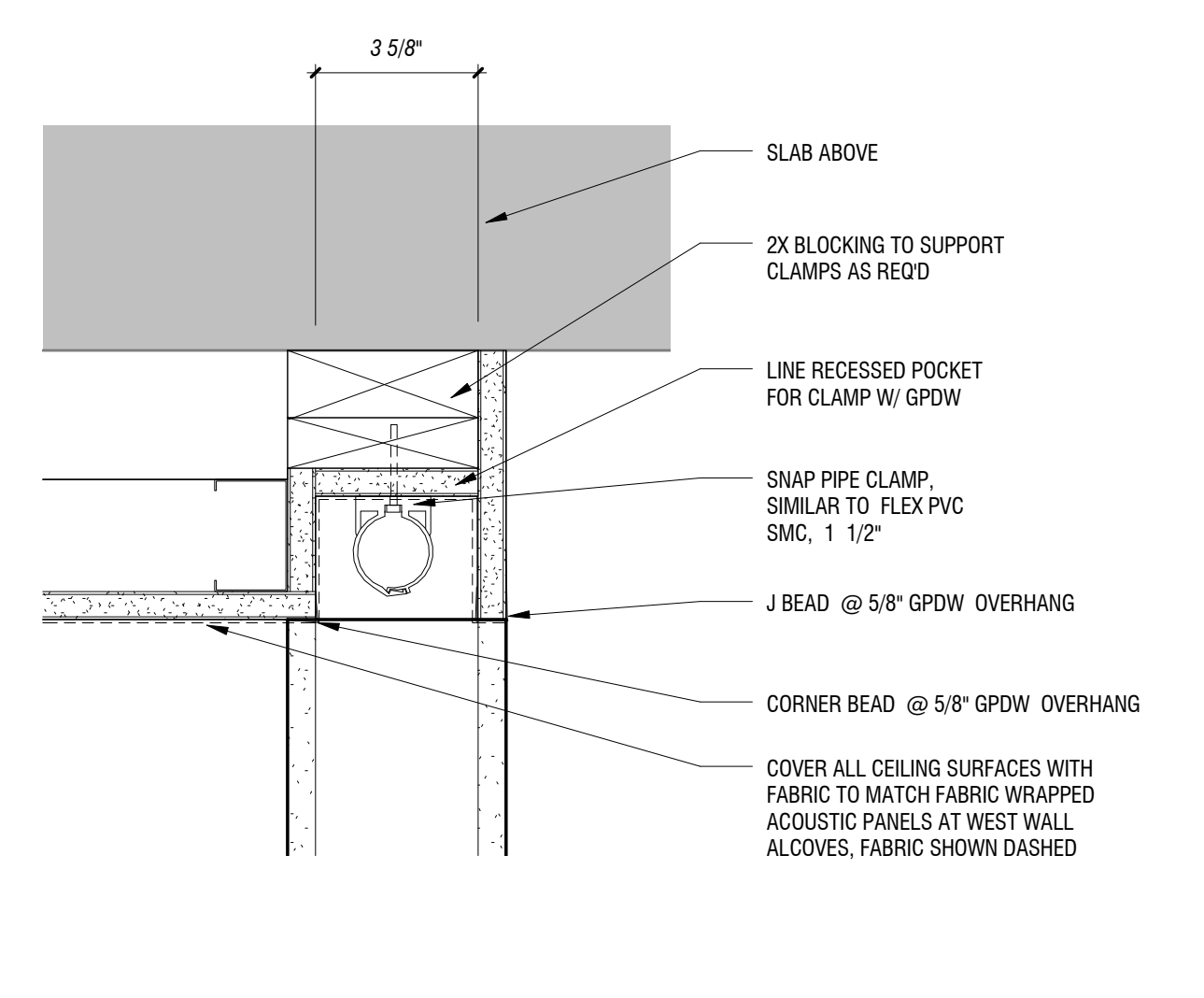
architect:  
**Looney Ricks Kiss**  
175 Toyota Plaza #600  
Memphis, TN 38103  
901 521 1440

MEP + fire protection:  
**OGCB**  
3485 Poplar Avenue #200  
Memphis, TN 38111  
901 452 6283

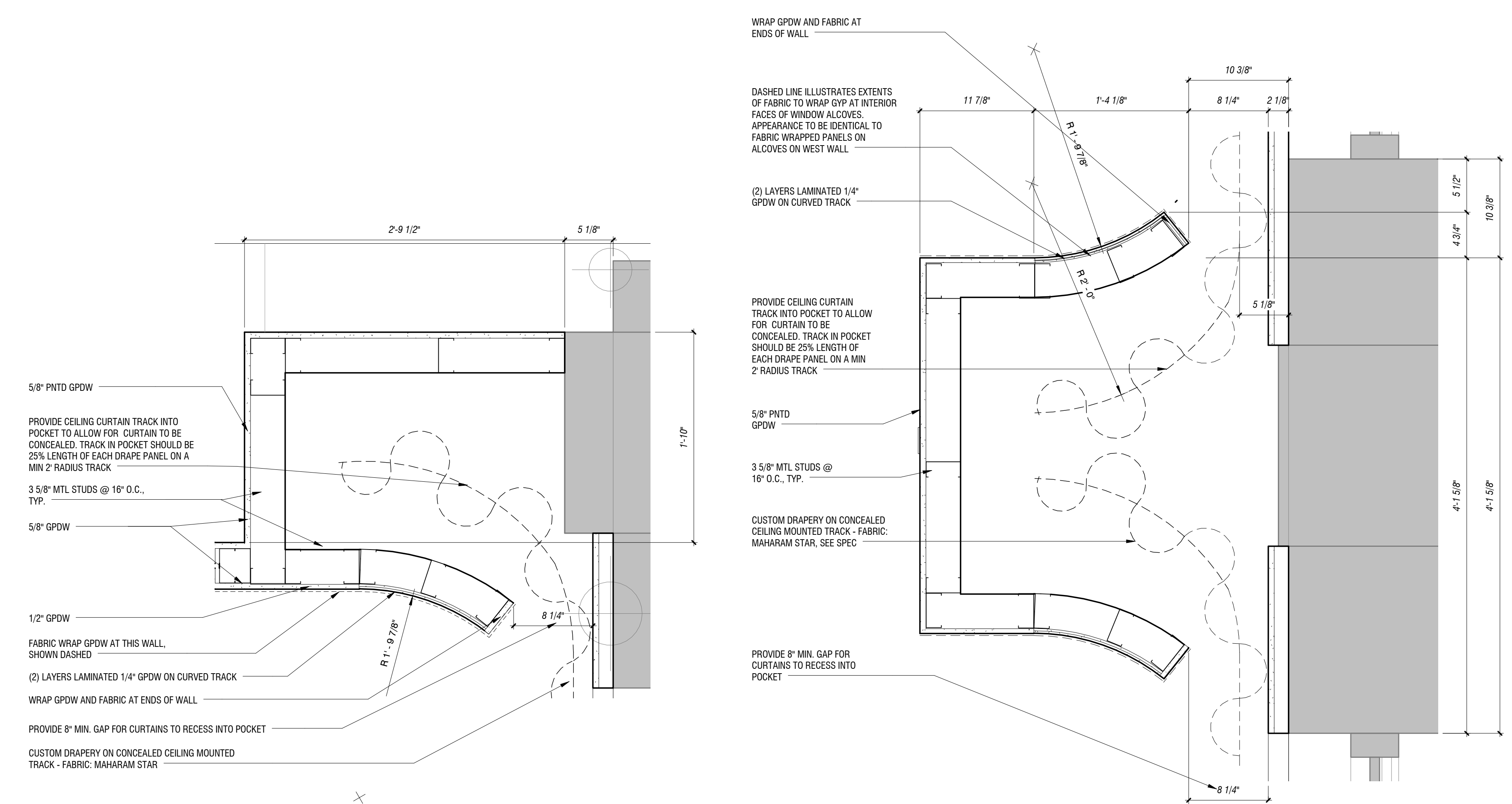
food services:  
**Fisher & Associates**  
1685 Galloway Avenue  
Memphis, TN 38112  
901 278 3116



**10 LISTENING ROOM - REMOVABLE PANEL ATTACHMENT**  
3\"/>

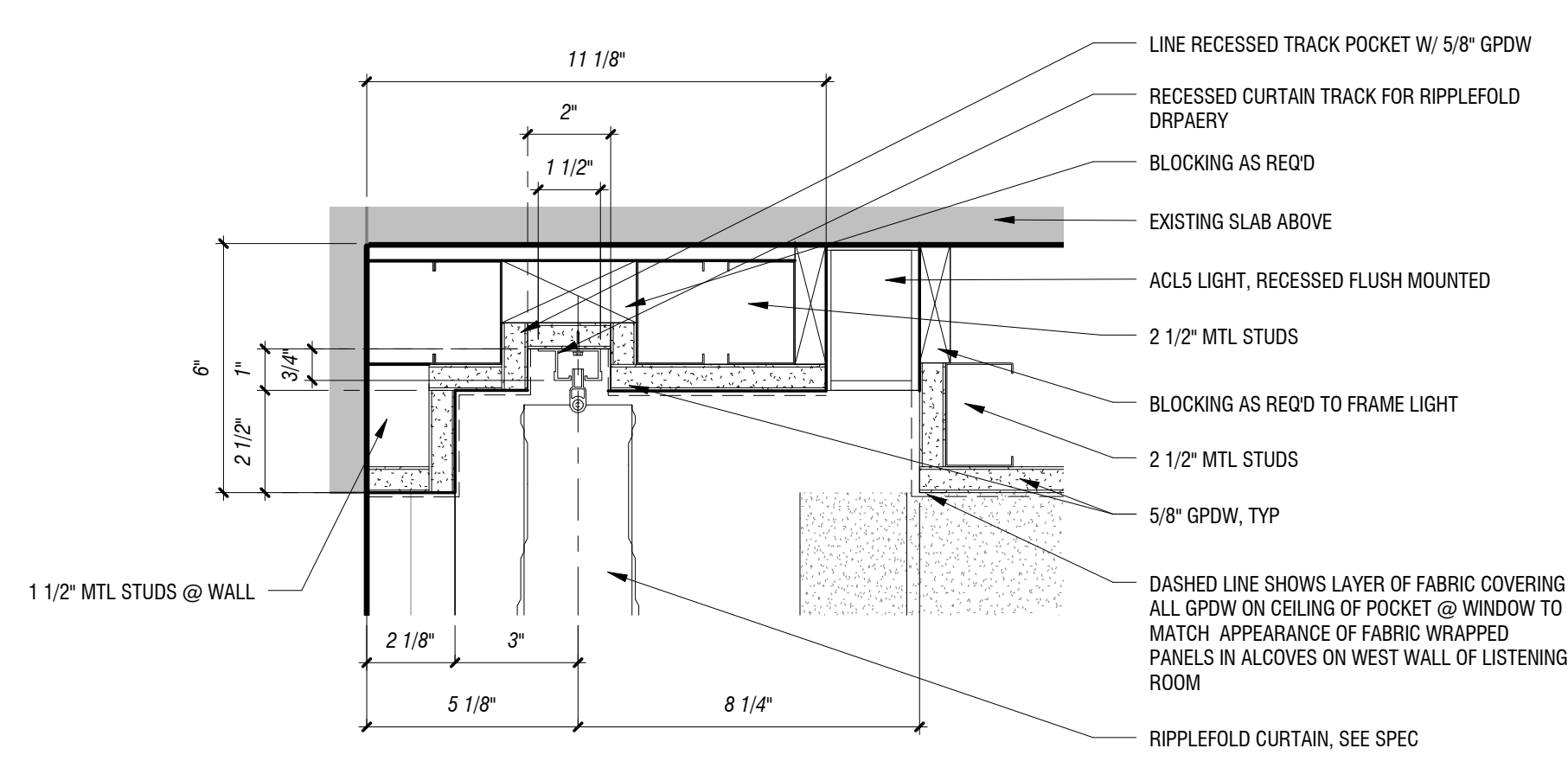


**9 LISTENING ROOM - REMOVABLE PANEL ATTACHMENT, NO PANEL**  
3\"/>

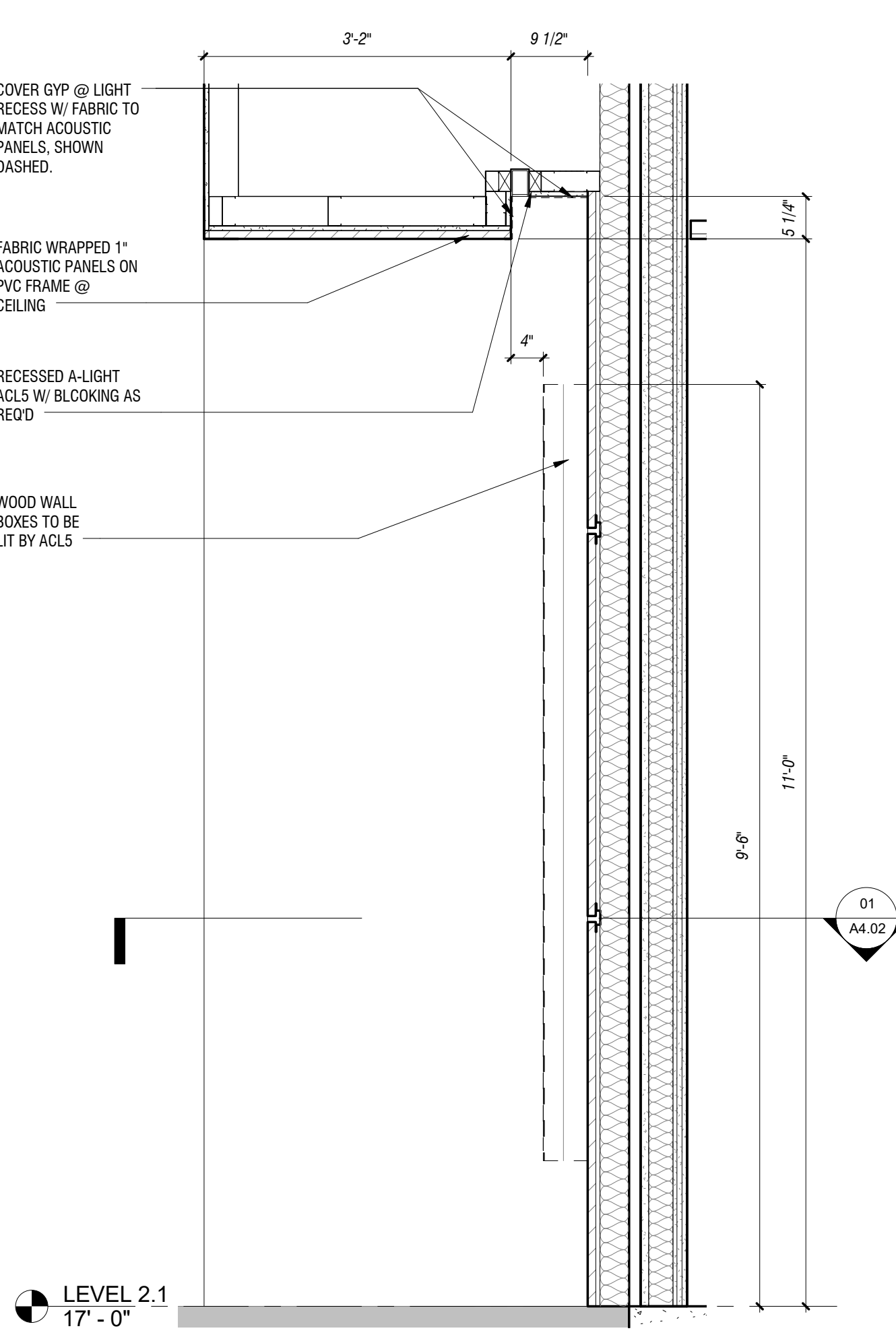


**03 LISTENING ROOM WALL - PLAN DETAIL**  
1 1/2\"/>

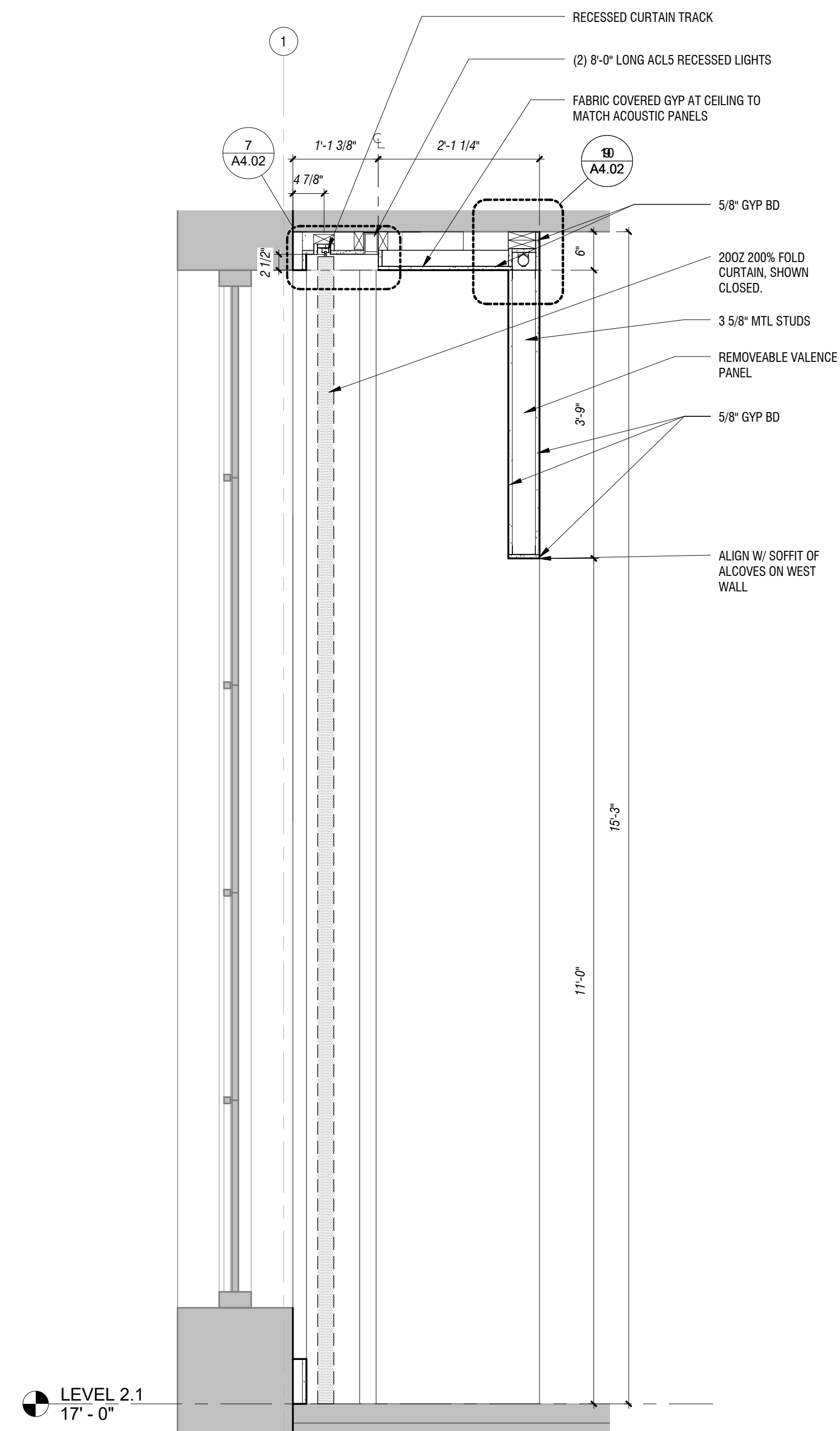
**02 LISTENING ROOM WALL - EAST - PLAN DETAIL**  
1 1/2\"/>



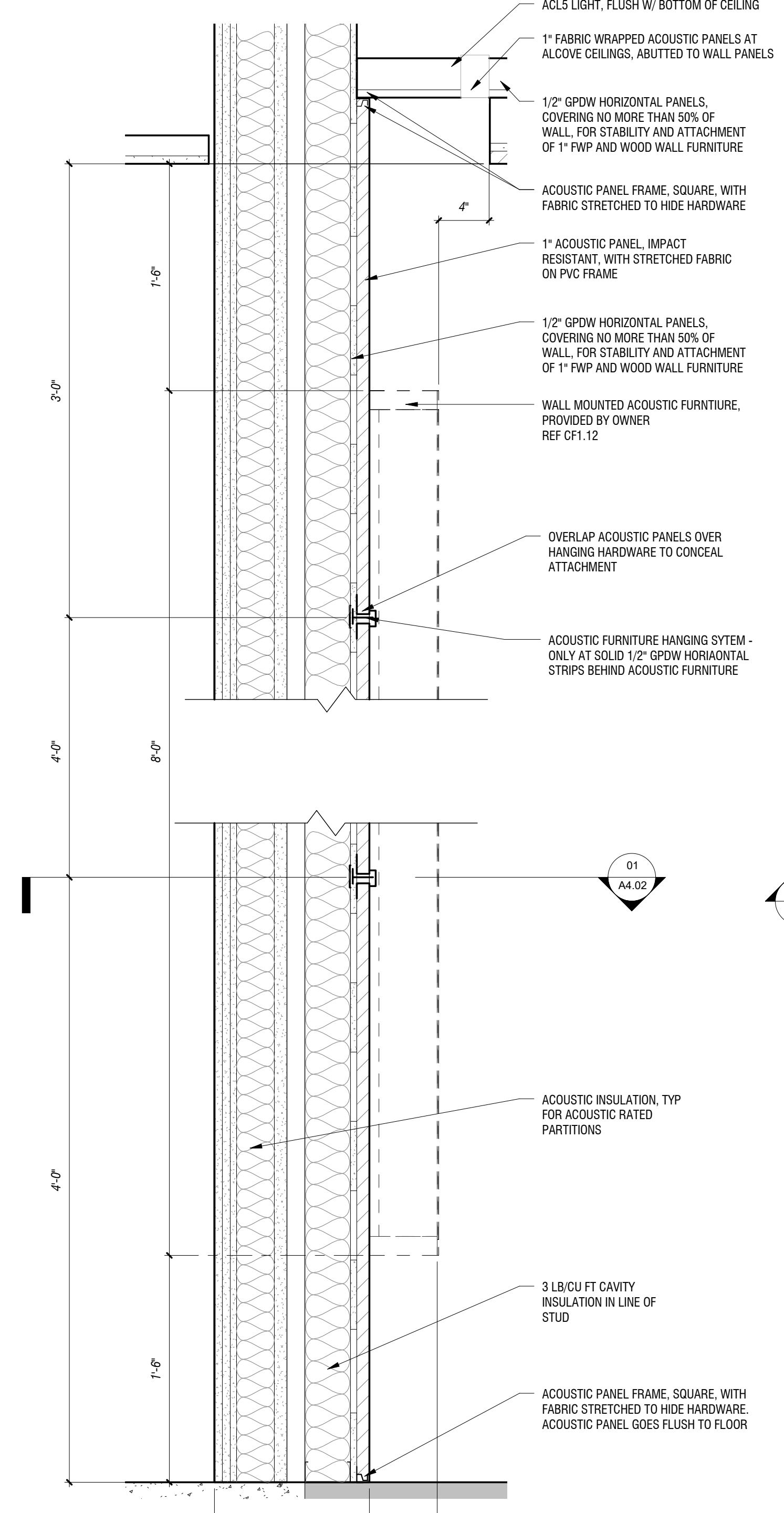
**7 LISTENING ROOM CURTAIN DETAIL**  
3\"/>



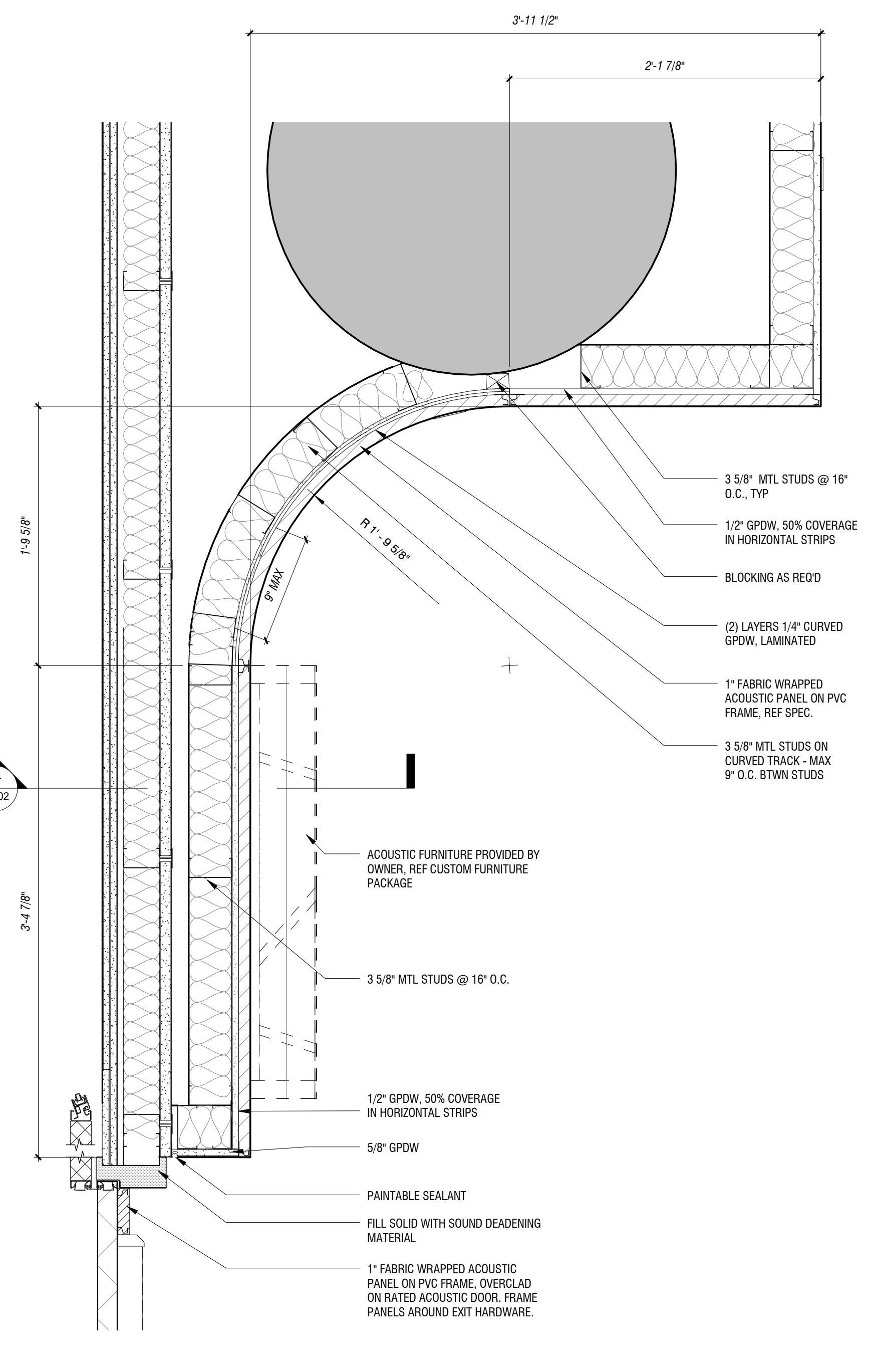
**5 LISTENING ROOM - SCALLOP SECTION**  
3/4\"/>



**8 LISTENING ROOM WINDOW SECTION**  
3/4\"/>



**04 LISTENING ROOM - BAFFLES - SECTION DETAIL**  
1 1/2\"/>



**01 LISTENING ROOM WALL - WEST - PLAN DETAIL**  
1 1/2\"/>

notes:

PERMIT SET

date: 2016/10/31  
scale: as noted at 30"x42"  
drawn: Author  
checked: Checker  
project #: 15-011

SECTIONS & DETAILS

**A4.02**



