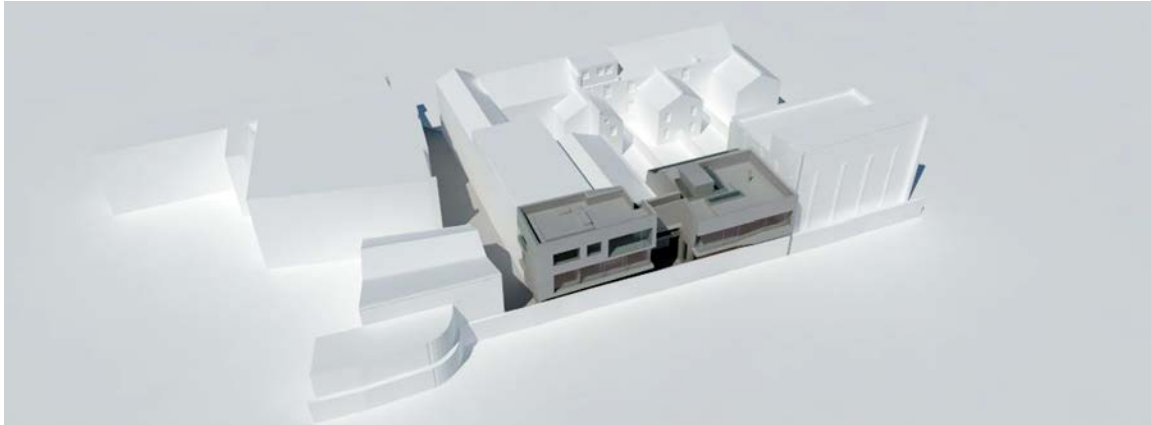


Spatial Affairs Bureau

Press Release_ 7 June 2012



©Spatial Affairs Bureau

Spatial Affairs Bureau has received full planning permission for its studio and private residence project for artists Rana Begum and Nathaniel Rackowe.

The Design and Conservation Officer at London Borough of Hackney, Matt Payne praised the design as a "well considered, contemporary scheme that fits neatly into the site" with a "strong but subtle presence".

Designed by a team led by Peter Culley and set in a unique brown field corner of Stoke Newington, North London, the approach creates a largely hidden miniature compound at the end of a narrow mews street, backing onto Abney Park Cemetery.

Nestled into existing Victorian light industrial and residential buildings, it will include two structures separated by a small courtyard garden. The first taller and narrower building is termed the 'gate house' and will house a ground floor display space, first floor family sleeping accommodation and a top floor apartment. Further into the site, and connected by a bridge at first floor level, the main house provides top lit art studios on the ground floor and family living accommodation above.

Almost the entire ground floor footprint is enclosed by the adjoining walls of 5 separate landowners, and so natural light is provided either by high level clerestory windows or roof lights.

Higher up, living and sleeping spaces are extended out along the east side, opening up to the dramatic, heavily wooded expanses of the cemetery. Tiered roof gardens are also incorporated on top of both buildings. The generally opaque wall conditions at ground level and also higher up towards neighbouring gardens at the west favour a super-insulated approach to minimise energy demand. The exposed concrete structural frame will also create interior climatic stability.

The exterior is clad in black stained timber, and is formed in a series of gently canted surfaces connected by a seam line that runs around the entire perimeter.

The project is currently in detailed design and work on site is expected to start in 2013.

Spatial Affairs Bureau



view from Abney Park Cemetery

©Spatial Affairs Bureau



view from first floor Living Room

©Spatial Affairs Bureau

Notes:

Spatial Affairs Bureau is a new organization headed by Peter Culley, former Associate Partner at Rick Mather Architects, with a developing portfolio of work in the US and UK.

www.spatialaffairsbureau.com

Rana Begum and Nathaniel Rackowe are successful international artists based in London. Rana Begum won the 2012 Jack Goldhill Award for Sculpture at this year's Royal Academy Summer Exhibition

www.ranabegum.com

www.rackowe.com

Images and further information are available by request from spencer@spatialaffairsbureau.com

Spatial Affairs Bureau



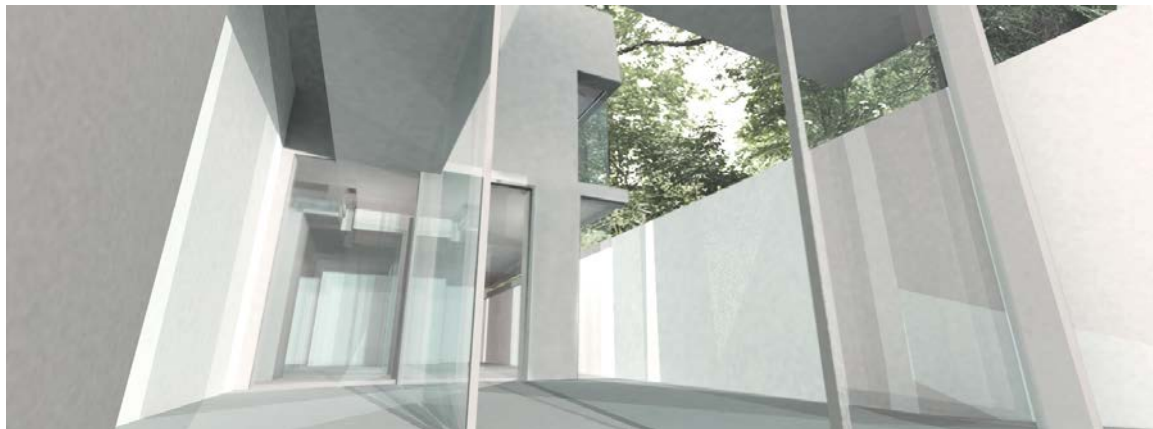
elevation to Abney Park

©Spatial Affairs Bureau



elevation to neighbouring gardens

©Spatial Affairs Bureau



towards the courtyard garden and main house

©Spatial Affairs Bureau